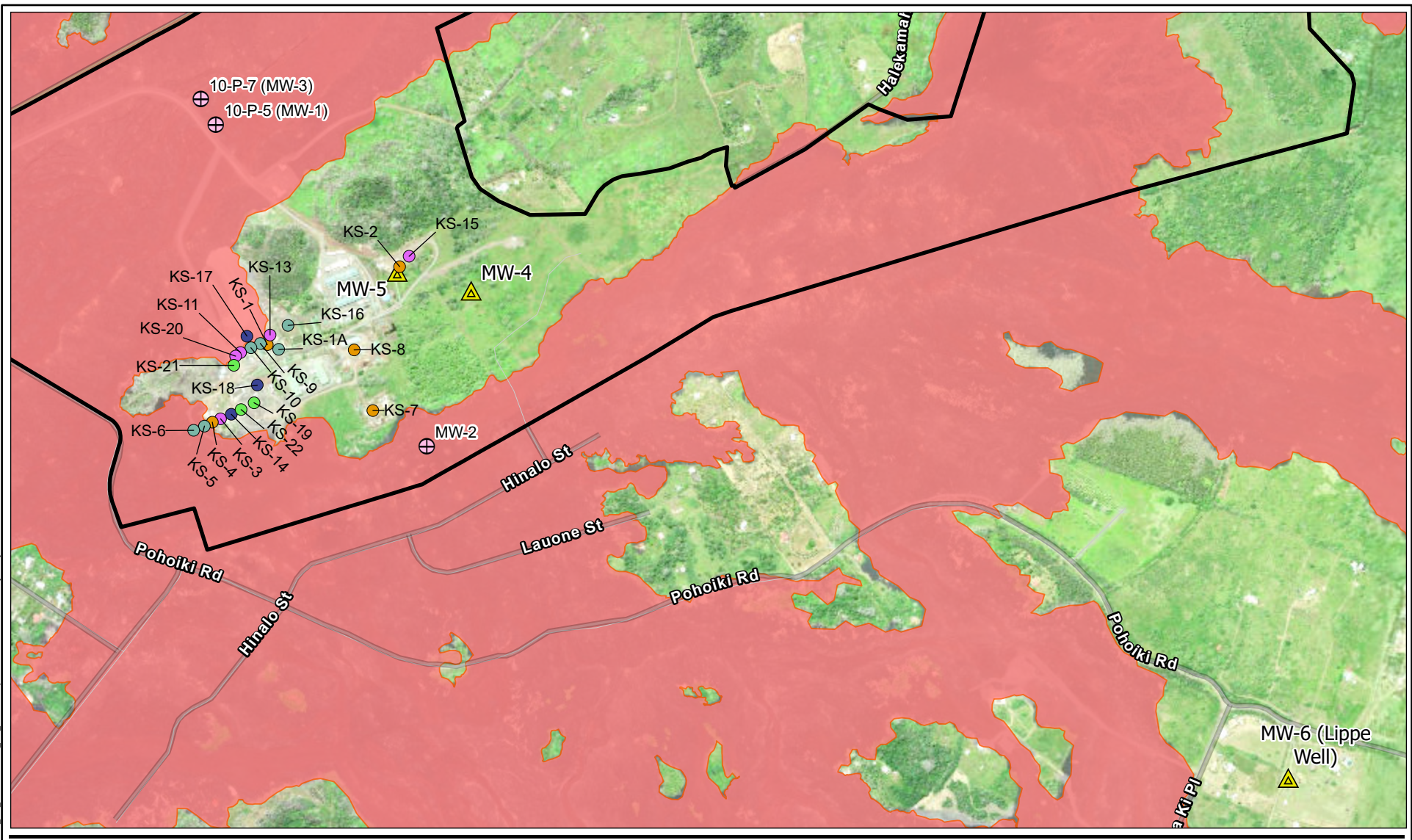


V:\2023\7\Active\185805496\_Puna\_EIS\03\_data\gis\cd\img\puna\_Puna\_EIS\_20230203\Print\_Puna\_EIS\_20230203.aprx Reviewed 2023-02-08 By: btabay/or



**Legend**

- PGV Property Boundary
- 2018 Lava Flow
- ▲ Current Monitoring Wells
- ⊕ Historical Monitoring Wells
- PGV Wellheads**
- Idle
- Injection
- Plugged and Abandoned
- Planned
- Production



0 600 1,200 US Feet  
1 in = 1,200 feet

Hawaii County, HI  
NAD 1983 StatePlane Hawaii 1 FIPS 5101 Feet

DRAWN BY: BT	1ST REVIEW: JT	2ND REVIEW: SS
DATE: 2023-02-06		PROJECT NO: 185805496

PUNA GEOTHERMAL VENTURE  
GEOTHERMAL REPOWER PROJECT  
ENVIRONMENTAL IMPACT STATEMENT

Figure 11  
Production, Injection  
and Monitoring Wells

Disclaimer: Stantec assumes no responsibility for data supplied in electronic format. The recipient accepts full responsibility for verifying the accuracy and completeness of the data. The recipient releases Stantec, its officers, employees, consultants and agents, from any and all claims arising in any way from the content or provision of the data.

Service Layer Credits: Sohl, Imagery/Vivid, 2020; Web Map Services data provided by USDA-FPAC. Images provided © 2021 Maxar Technologies Inc. Light Gray Base: Esri, HERE, Garmin, FAO, NOAA, USGS, EPA, Hybrid Reference Layer: Esri, HERE, Garmin, GeoTechnologies, Inc, METINASA, USGS, EPA, US Census Bureau, USDA Light Gray Reference: Esri, HERE, Garmin, FAO, NOAA, USGS, EPA