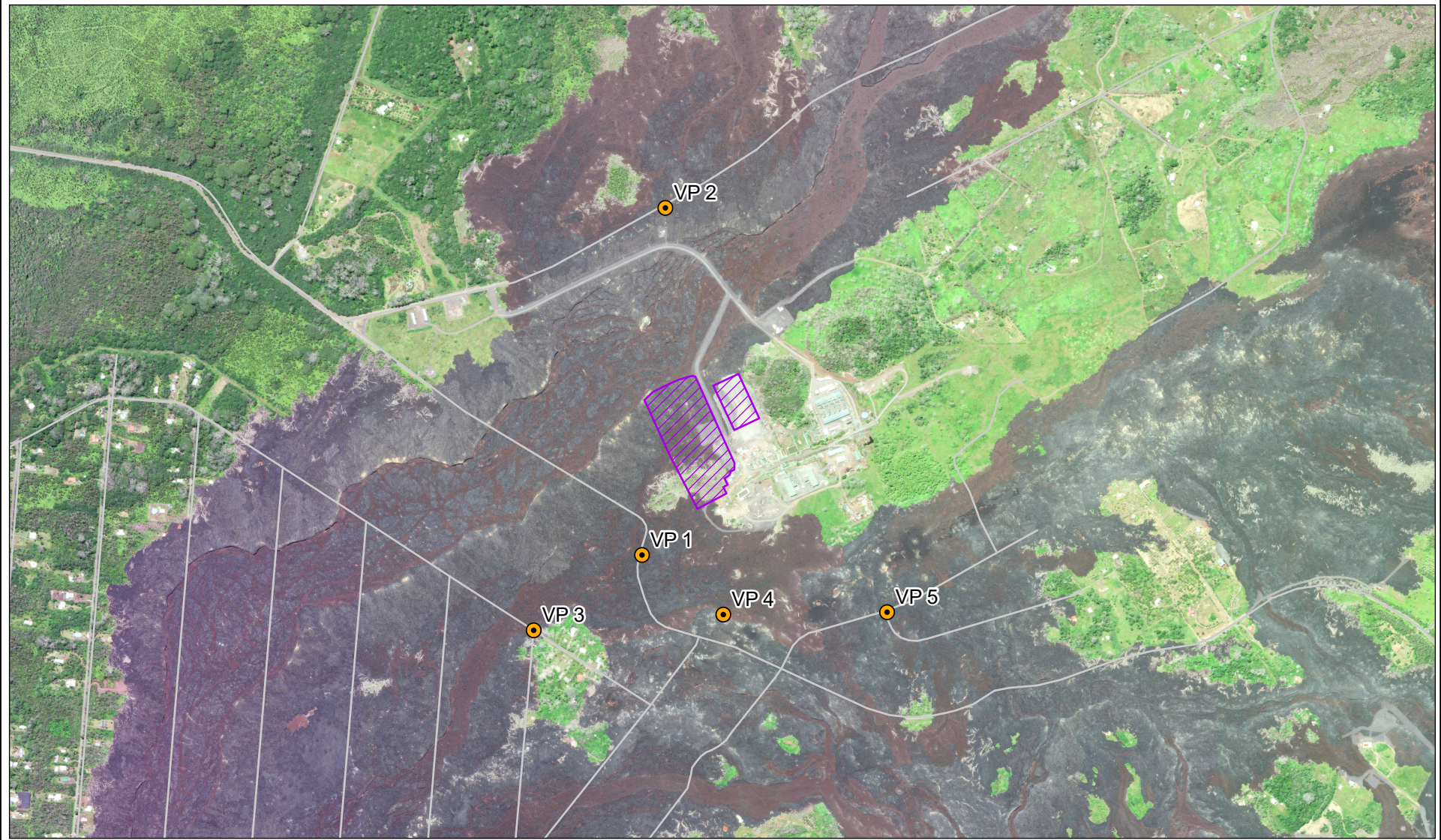


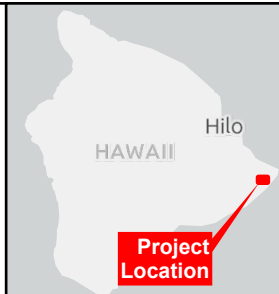


V:\2037\Active\185805496\_Puna\_EIS\03\_data\figs\cardinal\puna\_EIS\_20230203.aprx EIS\_20230203.aprx Reviewed 2023-02-07 By: jrdavis



#### Legend

-  Proposed Disturbance Area
-  Viewpoints



**Stantec**

0 750 1,500 Feet

1 in = 1,500 feet

Hawaii County, HI  
NAD 1983 StatePlane Hawaii 1 FIPS 5101 Feet

DRAWN BY: BT

1ST REVIEW: JT

2ND REVIEW: ML

DATE: 2023-02-07

PROJECT NO: 185805496

**PUNA GEOTHERMAL VENTURE  
GEOTHERMAL REPOWER PROJECT  
ENVIRONMENTAL IMPACT STATEMENT**

**Figure 13  
Viewpoints for  
Visual Analysis**

Disclaimer: Stantec assumes no responsibility for data supplied in electronic format. The recipient accepts full responsibility for verifying the accuracy and completeness of the data. The recipient releases Stantec, its officers, employees, consultants and agents, from any and all claims arising in any way from the content or provision of the data.

Service Layer Credits: Soil: Imagery/Vivid, 2020; Web Map Service data provided by: USDA-FPAC. Images provided © 2021 Maxar Technologies Inc.  
Light Gray Base: Esri, HERE, Garmin, FAO, NOAA, USGS, EPA  
Light Gray Reference: Esri, HERE, Garmin, FAO, NOAA, USGS, EPA